



# Map Skills

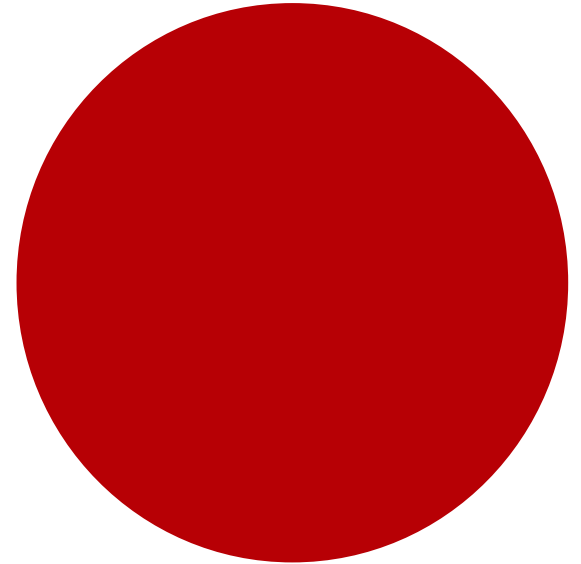
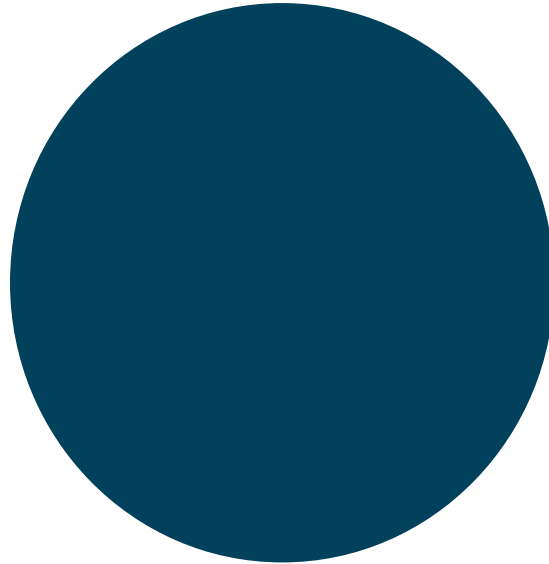
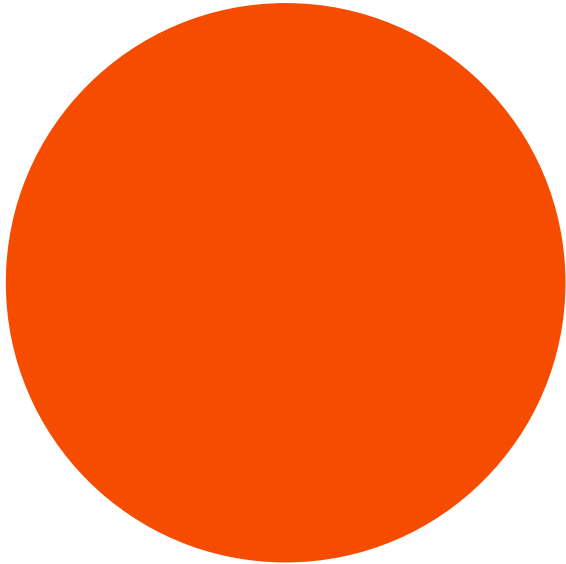
## Lesson One:

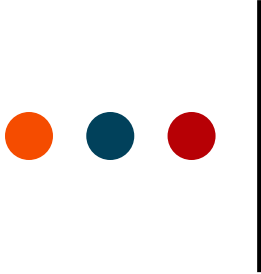
# An Introduction to Maps

**Royal  
Geographical  
Society**  
with IBG

---

Advancing geography  
and geographical learning





# What do the maps and globe feel and look like?

**Royal  
Geographical  
Society**

with IBG

Advancing geography  
and geographical learning



How are maps and  
globes different?



Is the map flat and  
smooth?

Is the Earth flat?

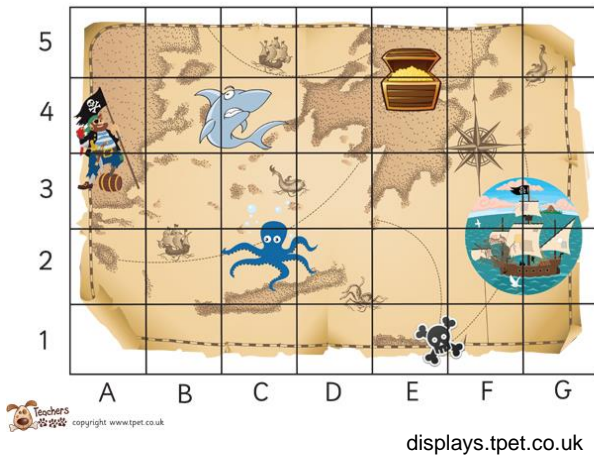
Why are  
maps  
useful?

What 3-D shape is the  
globe?

# Look at a range of maps, plans and globes

**Royal  
Geographical  
Society**  
with IBG

Advancing geography  
and geographical learning



Wikipedia Commons



Wikipedia Commons

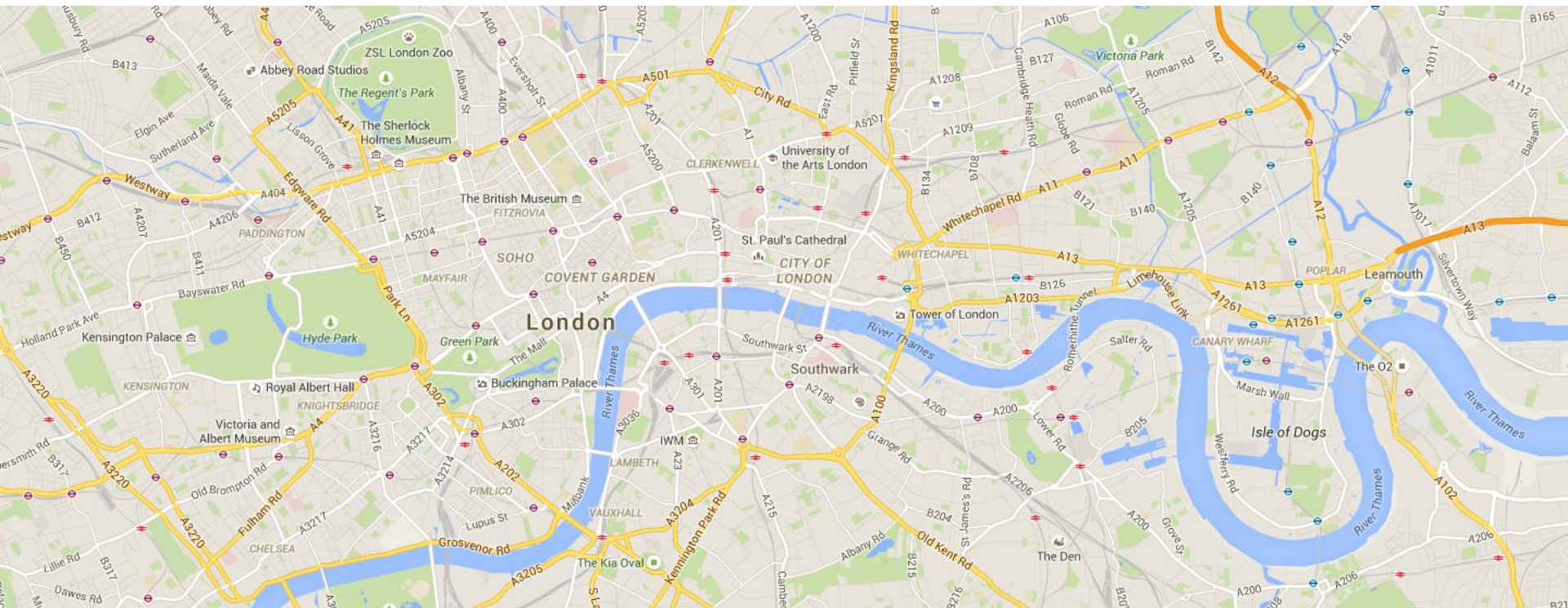
Have you seen maps like this before?

Where have you seen them?

# Map of London

**Royal  
Geographical  
Society**  
with IBG

Advancing geography  
and geographical learning



## What can you see on this map?

Source: google maps





# What do people use maps for?

- Maps are 2-D drawings of our world from above or a 'bird's eye view'.
- They help us find our way around and show where different places are in relation to each other (**distance and direction**).
- Maps can show small or large areas: from room plans to world maps.

# The world from above: a bird's eye view

**Royal  
Geographical  
Society**  
with IBG

Advancing geography  
and geographical learning

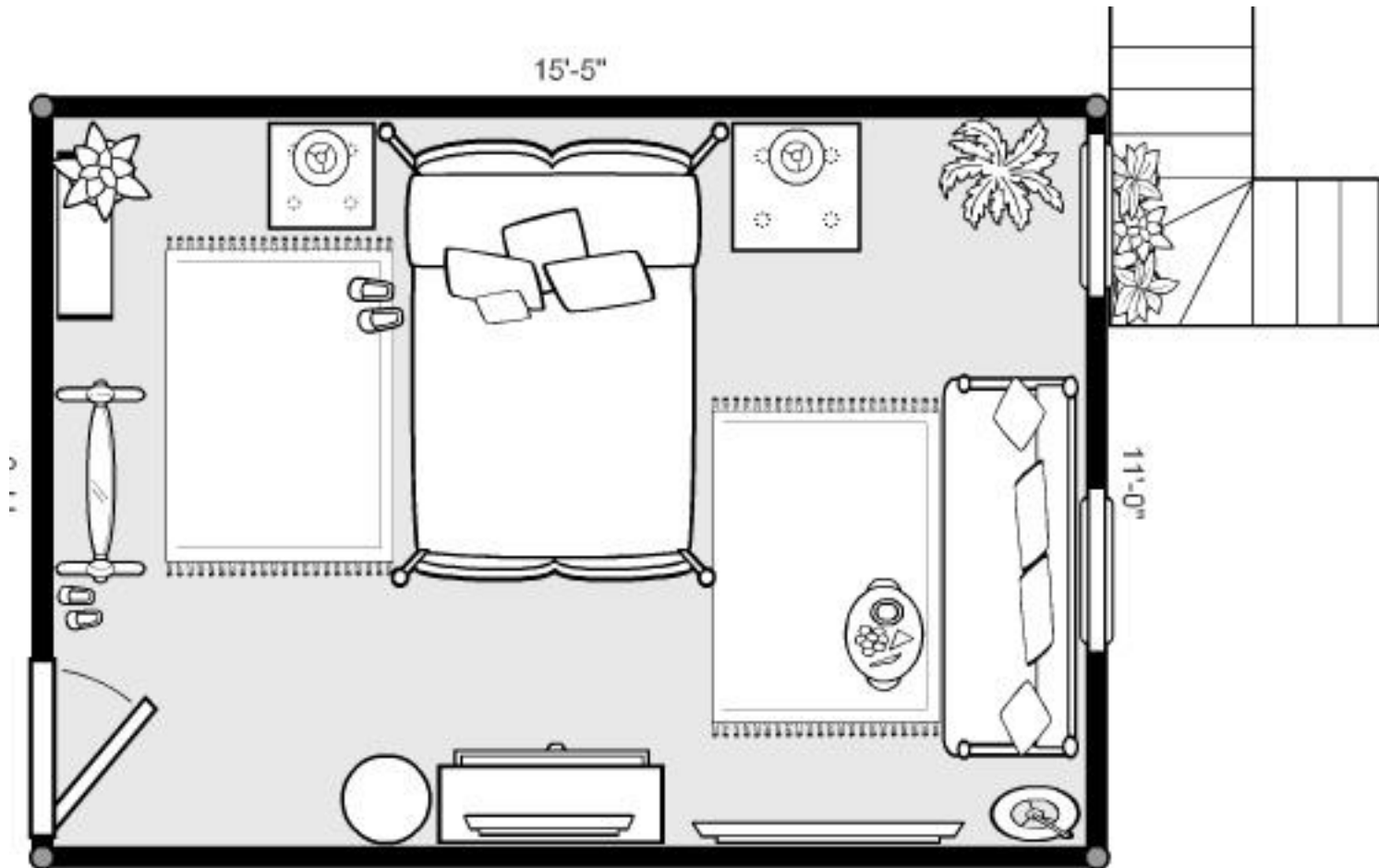


Project 365 #200: 190715 You Can See...© Pete, Flickr

# Floor plans are a view from above

**Royal  
Geographical  
Society**  
with IBG

Advancing geography  
and geographical learning

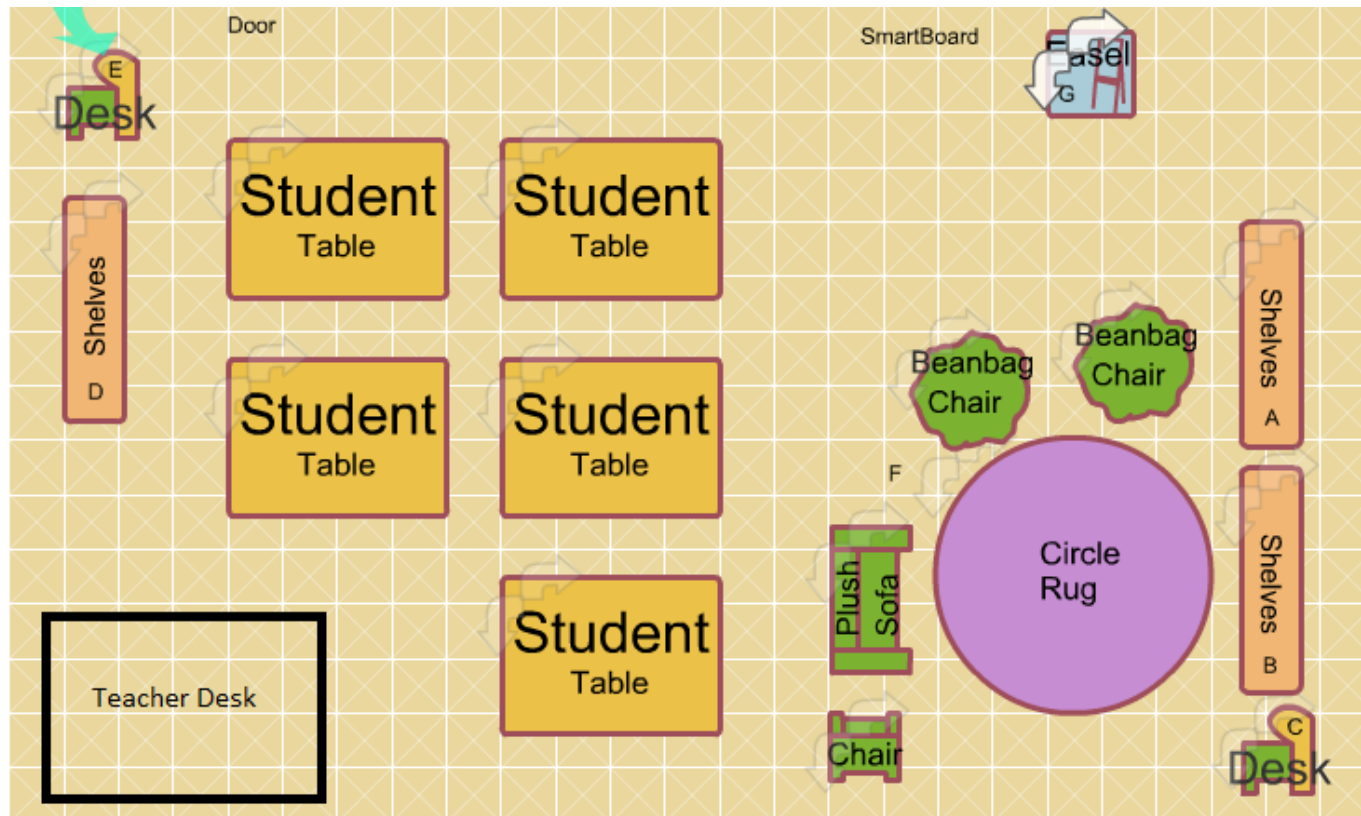


Mynextbedroom © Elif Altinbasak, Flickr

# What can you see on this classroom plan?

**Royal  
Geographical  
Society**  
with IBG

Advancing geography  
and geographical learning



How would our classroom look from above?

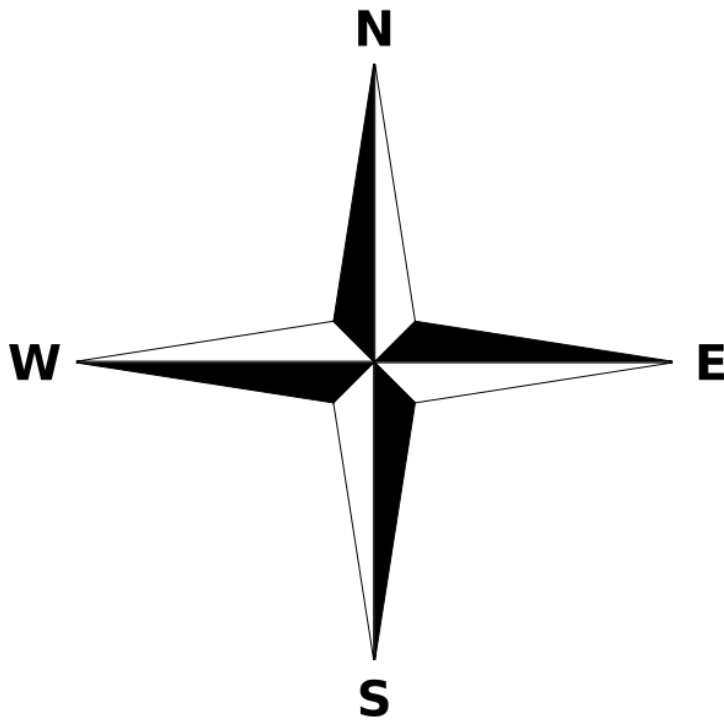




# Direction: Compass points

**Royal  
Geographical  
Society**  
with IBG

Advancing geography  
and geographical learning



© Wikipedia

**N**ORTH

**E**AST

**S**OUTH

**W**EST

# Compass and Direction

**Royal  
Geographical  
Society**  
with IBG

Advancing geography  
and geographical learning



Map Skills Subject Knowledge Animation © RGS-IBG



# Main Activity

## Draw a plan of the classroom

**Royal  
Geographical  
Society**

with IBG

Advancing geography  
and geographical learning

- Look around the classroom. What can you see?
- Try and draw what objects would look like from above, or from a 'bird's eye view'.
- Try and put everything in the right position.
- Include tables and chairs.
- Can you add the four compass points?
  - You will need a compass to help you find North



# Plenary

**Royal  
Geographical  
Society**  
with IBG

Advancing geography  
and geographical learning

- Share and compare your plans of the classroom.
- Play 'Toy Detectives'. Hide the class toy in the room and mark its location on the classroom plan.
- Can the 'detective' locate the toy using the classroom plan?

