



# Haytor View Community Primary School & Nursery

*Learning together - enjoying success - aiming high - celebrating difference – enriching community*

## Weekly Newsletter – 11<sup>th</sup> January 2017

*“ ..... They readily state that they feel very safe at school and appreciate the way staff look after them so well.” OFSTED October 2012*

**Chair of Governors: Niema Bohrayba**

### **BAD WEATHER PROCEDURES**

With the possibility of poor/snowy weather conditions occurring, please be aware that we would publish any information about closure of the school using the following:

School Website: <http://haytorview.devon.sch.uk>

Devon County Council Website: <https://new.devon.gov.uk/schools/closure>

Local Radio Stations: BBC Radio Devon, Heart Radio, Bay FM, Radio Exe



We would notify parents/carers of any closure via a ParentMail text message. Staff who live close to the school would inform children and parents at the school gate of the decision to close the school.

### **Emergency contact information**

It is essential that this is kept up to date so that under these or similar circumstances we can contact you. If you have yet to update us of a change of details, I would ask you to consider it as a matter of urgency.

### **EARLY MORNING ARRIVALS**



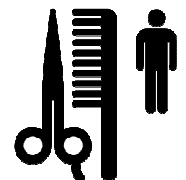
We are always pleased that parents and children are keen to be in school, and that the school building and grounds are used as a place to meet, chat, play and learn together. Over recent weeks however we are seeing significant numbers of children and parents are arriving in school much earlier, often 20-30 minutes, ahead of the **flexible start of the school day which sees doors to classrooms being opened at 8.35am.**

Could we ask for your consideration, and for you to have discussions with your children where necessary, as you plan your morning routines and arrival in school. The period before the start of the school day provides all staff with valuable planning and preparation time as well as the opportunity to ensure that they are ready to provide you and your children with what you need ahead of the school day. If you are able to ensure that your arrival in school is close to or within the flexible start to the school day this will in turn support the service that we are able to provide to you.

If you are facing challenges in respect of arriving in school on time, please feel free to talk to your child's class teacher or one of the school team who will always be keen to help with this. Many thanks for your support.

### **MALE MODELS WANTED**

- Trainee barber needs suitable models to enhance his training.
- Supervised cuts in salon. Appointments available Sunday AM or Wednesdays.
- OAPs and children welcome.
- **FREE OF CHARGE.**
- Please contact Richard on 07720 350799.



### **ACTIVE MUMS BIKE RIDES - ALL KIT PROVIDED!**



We have been told that bike rides for mums and their toddlers are taking place every Wednesday in Newton Abbot, and what's more they begin just a short walk away from our school!

The rides are very much 'no hassle' with all equipment being provided - bikes, helmets, trailers, seats, high-viz jackets as well as expert guides leading the rides!

If this sounds up your street then book places at <https://www.letsride.co.uk/rides/active-mums-ride> - rides take place **each Wednesday at 10.30am from Pro Cycle, Centre Bike Shop, Wharf Road, Newton Abbot, TQ12 2DA.**

If you go for it do let us know how you get on - we'd be interested to hear about it.

## **CHANGE TO DINNER MENU - THURSDAY 19<sup>TH</sup> JANUARY**

On **Thursday 19<sup>th</sup> January** we, in partnership with our caterers, are encouraging children to 'have a try' of school dinners if they do not normally have one.

The menu, see below, will be available at a cost of £2.20, or free of charge if your child is eligible for free school meals or in KS1 and receive universal free school meals.

Celebrating all that is healthy and enjoyable about our school meals, it's the ideal day to make sure that your child is having a hot, cooked school dinner or just to try out our new meals cooked by Fiona, Pip and Jo our school chef team.

### **The Menu**

- Sausages
- Veggie Burger
- Chips
- Served with Beans or Peas
- Ice cream
- Yoghurt
- Fruit



## **PREPARATION FOR GCSE MATHS LEVEL 1 – FREE COURSE**

**Starting Tuesday 17th January 10am – 12.30pm**  
**runs for 14 weeks**

**at the Passmore Edwards Centre in Newton Abbot**

This course is for those who haven't studied GCSE maths recently, and who would like to prepare for it prior to enrolling in September 2017.

**For more information call Learn Devon on 01392 384094**



### **CELEBRATING SUCCESS**

As part of our Social and Emotional Aspects of Learning the whole school are thinking about 'SEAL – Going for Goals'. Our **Community Celebration** on **Friday at 9.00am** in the school hall will shine the spotlight on the following celebration of our **Core Offer**:

### **'I recognise and value difference'**

- Mrs Galling has nominated Jensen Eardley
- Mr Hampton has nominated Paris Trott
- Miss Butler has nominated Fazerlee Bourner
- Miss Broomfield has nominated Chloe Packer
- Mrs Brine has nominated William Cude
- Mr Franklin has nominated Bethany Bell
- Mrs Cousins has nominated Gracelynn Pierce
- Mr Blurton has nominated Charlie Wicks-Graur
- Miss Cameron has nominated Kallum Golding

## **AMBASSADOR AWARDS**

Mrs Davey would like to nominate George Wiktorko for an ambassador award this week, as last week in the dining hall there was a large spill of water on the floor and without being asked, George went and got the wet floor sign for Mrs Davey and said he didn't want anyone to slip up. Well done George, you were a star!



### **ATTENDANCE AWARDS**

The following children have been nominated for being a 'Start of the Day Superstar' in Key Stage 1 Time to Think - well done!

- Jayden Lock and his mum
- Bobby Barr and his mum and dad

## **SAFEGUARDING – EVERYONE'S RESPONSIBILITY**

Concerned about a child?

If you have serious concerns about a child or young person, or if you need help parenting your child you can call 0345 155 1071 or email [mashsecure@devon.gcsx.gov.uk](mailto:mashsecure@devon.gcsx.gov.uk). Out of hours please call 0845 6000 388. If it is an emergency dial 999.

## **ATTENDANCE – WELL DONE TO MRS BRINE & YEAR 1**

OVERALL	F1	F2	Year 1	Year 2	Year 3	Year 4	Year 5	Year 6
97.8%	95%	98.7%	100%	97.5%	98.3%	97%	96.9%	96.7%